

State of Wyoming Corner Record

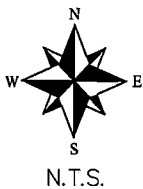
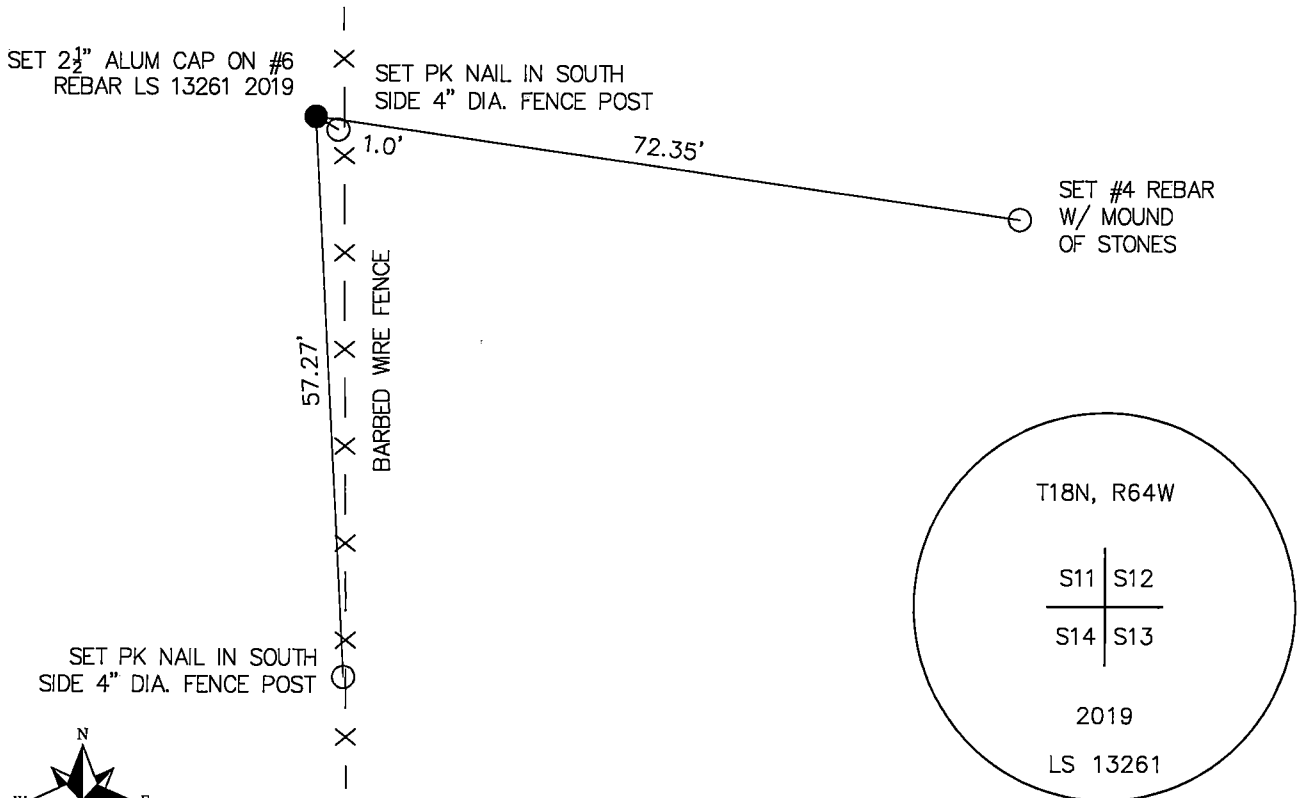
(In compliance with the CORNER PERPETUATION AND FILING ACT, Wyoming Statutes, 2013 Section 33-29-901 through 33-29-910, and the Rules and Regulations of the Board of Professional Engineers and Professional Land Surveyors)

Reverse side of this form may be used if more space is needed.

Record of original survey and citation of source of historical information (if corner is lost or obliterated). Description of corner monumentation evidence found and/or monument and accessories established to perpetuate the location of this corner. Sketch of relative location of monument, accessories, and reference points with course and distance to adjacent corner(s) (if determined in this survey). Method and rationale for reestablishment of lost or obliterated corner.

ORIGINAL GLO RECORD: Sandstone 18"x14"x4", 4 Notches south side, 1 Notch east side.
 MONUMENT FOUND: Broken sandstone set in ground.
 MONUMENT SET: 2½" Aluminum Cap on a #6 Rebar, four (4) inches above ground, stacked stones around monument for corner common to Sections 11, 12, 13 and 14.
 REFERENCES: Set References as shown below.
 All dimensions are in US Survey Feet

Monument location: Supersedes monument record recorded 11/13/2019

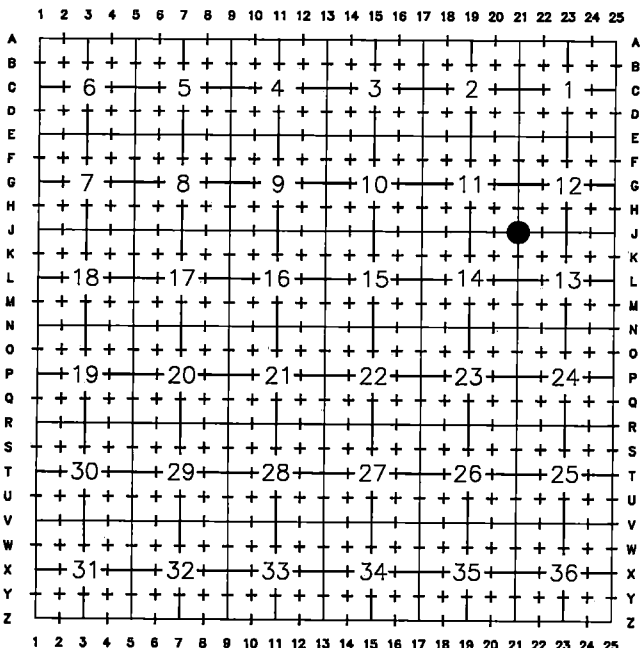


Monument Inscription

Date of Field Work: 12/31/2019

Office Reference: 1903-005 #99991

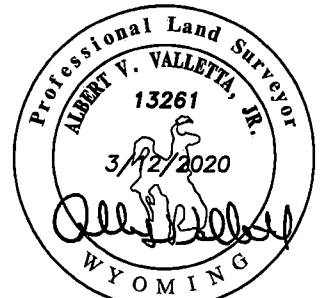
Cross Index Plat



Firm/Agency, Address
 DALEY LAND SURVEYING, INC.
 17011 LINCOLN AVE., #361
 PARKER, CO 80134
 (303) 953-9841

This corner record was prepared by me or under my direction and supervision.

SEAL & SIGNATURE



RECP #: 774297
 RECORDED 3/23/2020 AT 2:42 PM BK# 2664 PG# 1906
 Debra K. Lee, CLERK OF LARAMIE COUNTY, WY PAGE 2 OF 2

Corner Name Southeast Corner Section 11, T 18 N, R 64 W, 6th P.M.

Cross-Index No.: J-21

County: LARAMIE